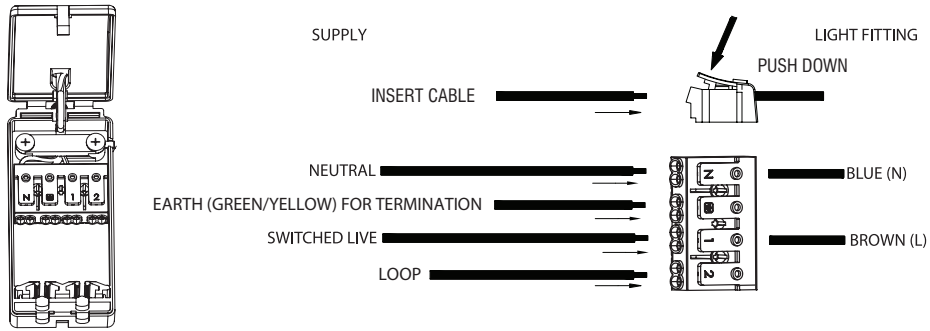


Wiring

- Unclip the cover from the quick fit connection case. Having correctly identified the wiring from your existing light fitting, pull the mains wire through the hole and connect to the connection block inside the quick fit connection case in the following way. No tools are necessary.

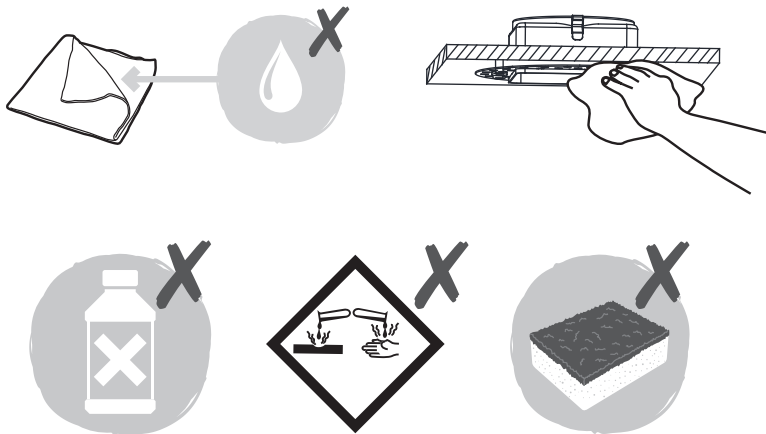


Check that...

- You have correctly identified the wires.
- The connections are tight.
- No loose strands have been left out of the connection block.
- The cover on the connection box has been replaced.

Care and Safety

- We recommend cleaning with a soft dry cloth. Do not use solvents or abrasive cleaners as these could damage the finish.
- Always disconnect the product from mains at least 10 minutes allowing to cool down before any maintenance or adjustment.



V6 05/09/2020

Instruction leaflet

Trimless Downlight

92538, 78954, 78955



CE

saxby
lighting

Thank you for purchasing this light fitting. Please read the instruction carefully before use to ensure safe and satisfactory operation of this product. Please retain these instruction for future reference.

Warning

Please read these instructions carefully before commencing any work.

This unit must be fitted by a competent and qualified electrician.

Install in accordance with IEE Wiring regulations and current Building Regulations.

Check the pack and make sure you have all of the parts listed.

To prevent electrocution switch off at mains supply before installing or maintaining this fitting. Ensure other persons cannot restore the electrical supply without your knowledge.





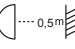

If replacing an existing fitting, make a careful note of the connections.

This light fitting should be connected to a fused circuit.

Always use the correct type and wattage bulb. Never exceed the wattage stated.

Waste electrical products should not be disposed of with household waste. Please recycle where facilities exist. Check with your local authority or retailer for recycling advice.

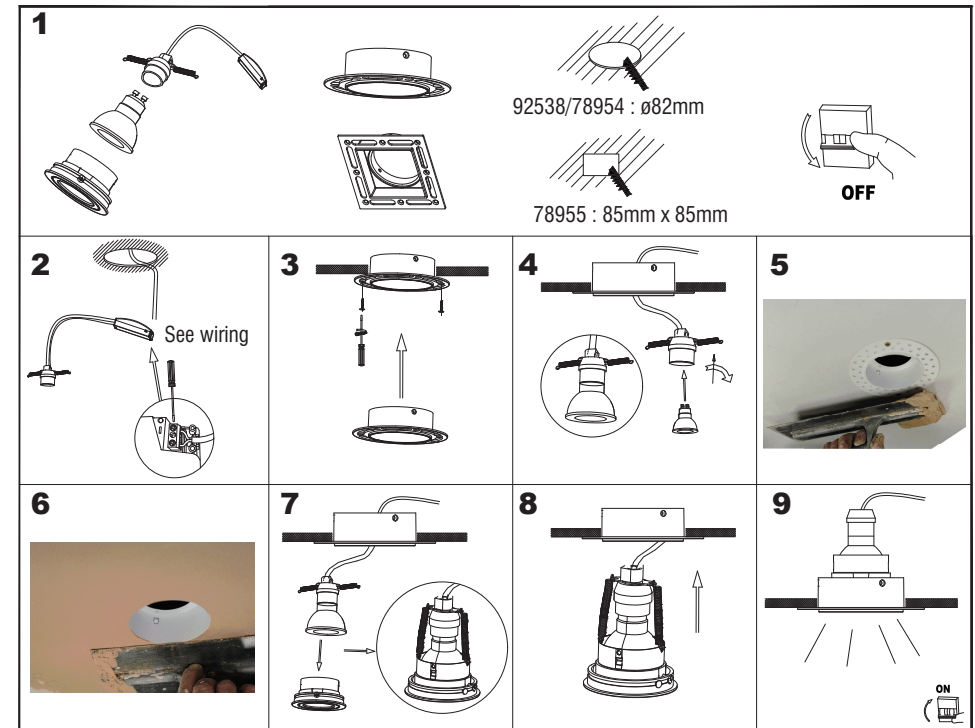
Technical data

Supply Voltage:	240 V~, 50 Hz
Bulb Type:	1 x Max.50W GU10
	Conformity with all relevant EC Directive requirements.
	Waste electrical products should not be disposed of with household waste. Please recycle where facilities exist. Check with your Local Authority or local store for recycling advice.
	Class II product - Double Insulated - No earth required.
	This product is suitable for dimming.
	Minimum distance from lighted objects (0.5 metres)
	This product is NOT suitable for direct mounting on normally flammable surfaces (suitable only for mounting on non-combustible surfaces).
IP20	

Installation

Existing fittings must be completely removed before installation of a new product. Before removing the existing fitting, carefully note the position of each set of wires.

- Note that the power needs to be isolated/switched off at the fuse board.
- The ceiling surface must be flat and smooth to ensure a good fit.
- Cut the correct sizes hole using an appropriate tool:
92538 / 78954 : $\varnothing 82\text{mm}$ 78955 : 85mm x 85mm
- It is recommended to cut the hole slightly smaller than needed, then file the hole until the recessed unit fits snugly.
- The distance between units must be 0.5m minimum.
- The unit must be located a minimum distance of 100mm from a joist.
- Ensure a minimum ceiling void depth of 130mm is available.
- Ensure free movement of air by removing void insulation from at least 150mm from around the hole. Under no circumstances must these fittings be covered with insulating matting or similar material.
- Secure the product to the ceiling with the supplied screws.
- This product must be mounted out of arms reach.
- This product has no special protection against the ingress of moisture.
- Please remove the PVC cover before using.
- Switch on. Your light is now ready for use.



Replacing bulbs

- Unclip the front bezel and let the bulb drop out.
- Mounting light source
- Clip the front bezel back in position.