

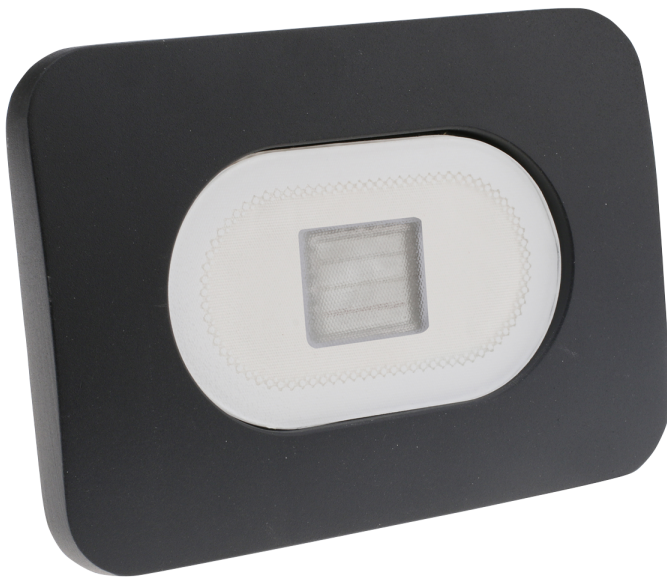
LEYTON

Product Data Sheet

30W RGB slimline LED flood light black finish

Part No: **CULVER30-RGB**

- Features a quick fix bracket design allowing fixing without removing bracket from floodlight
- Slimline design
- 1 metre bare ended input lead
- Remote control features include: colour changing, dimming, manual on/off & various present functions



Technical Specification

Part No	CULVER30-RGB
Colour Temperature	RGB
Finish	Black
Voltage	240
Wattage	30

CRI	80
IP Rating	54
Dimmable	N
Lamp Holder	Integrated LED
Connector Type	Bare End
Length	124
Width	175
Depth	46
Class 1 or 2 or 3	I
Material / Made From	Metal
EAN	5055530823990