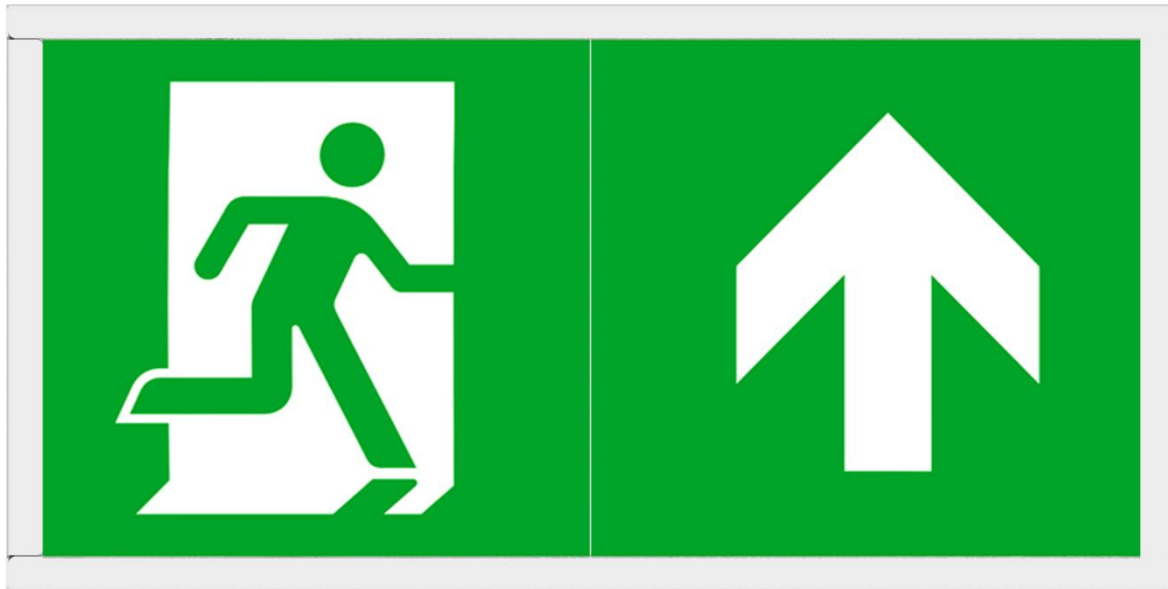


Belum

LED Emergency Exit Sign or Panel Luminaire



Overview

Kosnic's Belum LED emergency exit sign is a self-contained, multi-purpose, maintained or non-maintained 3-hour emergency exit sign solution. The fitting is a wall mounted panel that may also be used as a standard emergency luminaire without the exit sign graphic. It also includes a row of LEDs along the bottom edge and is supplied with the upward arrow exit sign. Standard or Self-Test versions available.

Features

- Slim profile LED panel
- Three hour rated duration
- Maintained or non-maintained operation
- Class I, IP20
- Uniform backlight
- Bottom edge LEDs
- Surface mounting
- Li-Ion battery
- Choice of exit sign graphics
- Mercury free

Specifications

| Order Code | BEL0105 | BEL0105/ST |
|---------------------------------|---|---|
| Input Power (Max) | 5 W | 5 W |
| Emergency Output power | 1 W | 1 W |
| Voltage | 220-240 Vac 50-60 Hz | 220-240 Vac 50-60 Hz |
| Current | 35 mA | 35 mA |
| Protection | Class I, IP20 | Class I, IP20 |
| Power Factor | 0.57 | 0.57 |
| Luminous Flux without exit sign | Maintained Mode 140 lm / Emergency Mode 140 lm | Maintained Mode 140 lm / Emergency Mode 140 lm |
| Luminous Flux with exit sign | Maintained Mode 70 lm / Emergency Mode 70 lm | Maintained Mode 70 lm / Emergency Mode 70 lm |
| CCT | 6500 K Day Light | 6500 K Day Light |
| Lifetime (h) | 40000 | 40000 |
| Warm-up time to 60% | Instant full light | Instant full light |
| LMF at Nominal Lifetime | 0.75 | 0.75 |
| Height x Width x Depth | 194 mm x 391 mm x 53 mm | 194 mm x 391 mm x 53 mm |
| Mounting | Surface | Surface |
| Weight | 1.08 kg | 1.08 kg |
| Inrush Current (peak/duration) | 12.4 A / 120 μ s | 12.4 A / 120 μ s |
| Ambient Temperature Range | 0 to 40 °C | 0 to 40 °C |
| Emergency Conversion Time | 1 second | 1 second |
| Emergency Operating Time | 3 hours | 3 hours |
| Battery Charging Time | 24 hours | 24 hours |
| Battery Life | 4 years | 4 years |
| Battery Type | Li-Ion | Li-Ion |
| Battery Capacity | 2000 mAh | 2600 mAh |
| Battery Voltage | 3.6 V | 3.7 V |
| Battery Code | KBAT2000L11 | KBAT2600L11 |
| Emergency Operation Test | Manual | Self-Test (ATS Type S) |

Accessories

| Type | Code | |
|---------|-------------|---------------------------------------|
| Battery | KBAT2000L11 | Li-ion, 2000mAh, 3.6V (for standard) |
| Battery | KBAT2600L11 | Li-ion, 2600mAh, 3.7V (for self-test) |

Dimensions

