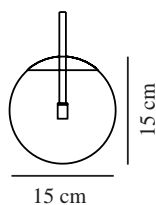
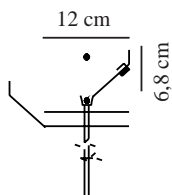


# GRANT 15 | PENDANT | BRASS

2010553035

nordlux®



Voltage (V): 230 Volt  
IP degree: IP20  
Maximum bulb wattage (W): 15W  
Class (Class 1, Class 2, Class 3):  
Class 2 (Double isolated)  
Socket type: E14

Primary material: Glass  
Secondary material: Metal  
Colour of the glass: Opal white  
Colour of the cable: White  
Length of the cable (cm): 200  
Surface material of the cable:  
Plastic  
Is the cable replaceable: False  
Colour: Brass

Height (cm): 29  
Width (cm): 15  
Shade Diameter (cm): 15  
Shade Height (cm): 15  
Length (cm): 15

EAN: 5704924001109  
TUN: 2100561  
Item Number: 2010553035  
Pcs Per Master Carton: 3

Sales Box Height (cm): 28  
Sales Box Width (cm): 17  
Sales Box Depth (cm): 17  
Sales Box Volume m³: 0.0081  
Product net weight (kg): 0.83

- Glamorous modern style • Decorative brass canopy
- Provides a soft, diffused light • Matte white opal mouth blown glass

Grant balances simplicity and elegance in the best way imaginable, where all the unnecessary decorations are removed, allowing the shape and materials to stand out. The beautiful luminous spherical glass dome is enclosed by its frame, creating a complete and decorative whole.

Grant pendant contributes to one of today's major design trends with the use of brass and white opal glass. An elegant detail is the canopy in brass, which creates a complete whole between the top of the pendant and the canopy. Grant is beautiful both individually and in clusters and can be combined with the other pendant sizes in the series.

The glass in this lamp is mouth-blown and has been individually hand crafted. Due to this unique process, air bubbles may appear in the glass and the thickness of the glass can also vary. This gives the glass its character and vivid appearance.

[www.nordlux.com](http://www.nordlux.com)