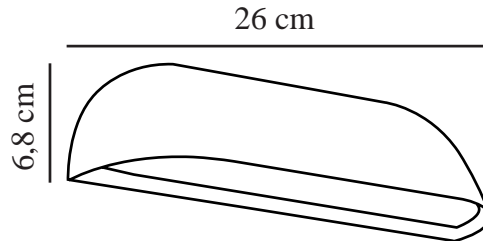
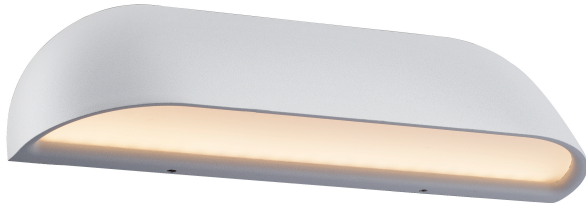


# FRONT 26 | WALL LIGHT | WHITE

84081001

nordlux®



Voltage (V): 230 Volt  
IP degree: IP44  
Class (Class 1, Class 2, Class 3):  
Class 1 (Earth contact)  
Socket type: LED Module  
Parallel connection: True

Primary material: Metal  
Secondary material: Plastic  
Colour of the glass: Opal white  
Suitable for Seaside: False  
Colour: White

Height (cm): 6.8  
Width (cm): 26  
Projection (cm): 6.8

EAN: 5701581341180  
TUN: 1848128  
Item Number: 84081001  
Pcs Per Master Carton: 3  
Sales Box Height (cm): 7

Sales Box Width(cm): 17  
Sales Box Depth (cm): 8  
Sales Box Volume m<sup>3</sup> : 0.001  
Product net weight (kg): 0.455

Brightness of light (Lumen): 650  
Colour temperature (Kelvin): 3000  
Ra-value : 80  
Lifetime (hours): 25000  
Energy class: F  
Actual watt (W): 9.8

- Designed for both outdoor and bathroom use
- Built-in parallel connection
- 5-year LED guarantee

FRONT is designed for the classical mansion as well as the modern home. The fixture is manufactured in cast aluminium, which supports the simple and clear design idiom. This means that FRONT blends naturally into the architecture of the home. It also means that FRONT fulfils the requirements of being a light source, and an atmospheric element, with the utmost ease. An up-to-date solution with energy-efficient LED technology. Design by HolmbäckNordentoft.

**ENERGY**

**Nordlux**  
84081001

A  
B  
C  
D  
E  
F  
G

**95**  
kWh/1000h

2019/2015