

- Step 2

Using the connector block supplied, connect the wires as shown on the diagram to the right.

Check that you have correctly identified the house wires, that all connections are tight, and that no loose strands have been left out of the connection blocks.
- Step 3

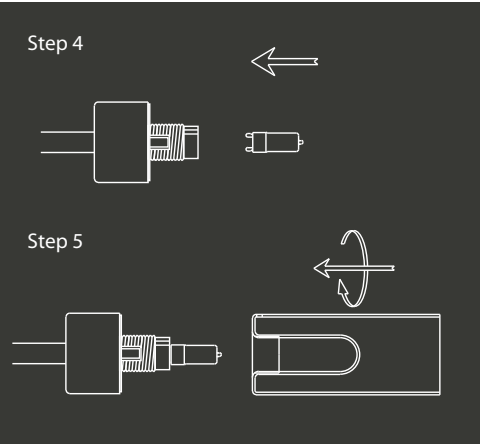
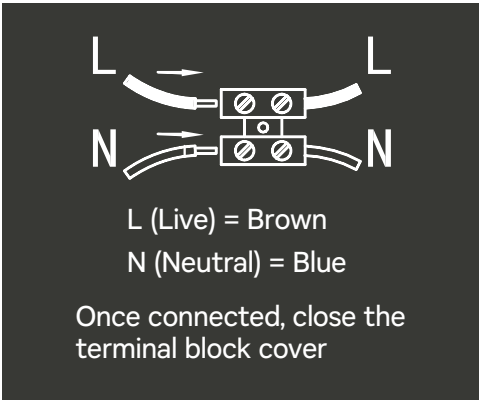
Offer the ceiling cup up to the mounting strap and secure in place using the screws/washers.
- Step 4

Identify the correct maximum wattage and type of bulb by referring to the product labelling.
This product requires 3 x 3W max. LED G9 capsule bulbs (bulbs not included).

Caution: Only use a bulb of the same type designation and shape, and ensure the wattage is equal or lower to the maximum wattage stated on the label.

Allow the lamp to cool for at least 10 minutes before replacing spent bulbs.
- Step 5

Screw the glass shade onto the lamp holder.



Diagrams shown for illustration purposes only – product may differ slightly from the ones shown overleaf.

This product should be disposed of responsibly at the end of its life. Please recycle where facilities exist. Check with your local authority or retailer for recycling advice.
(Waste Electrical and Electronic Equipment Directive)



HELPLINE

If you receive this item with parts broken or missing, please telephone: 0333 0050077
Please have ready your name, address, tel. no., product reference, where purchased and parts required. An answering service is in operation outside office hours and during busy periods.
We regret that we are unable to give advice on internal house wiring.
Cascade Holdings Ltd, Gorse Mill, Gorse Street, Oldham, OL9 9RJ

www.cascadehl.com/#contact

EU AUTHORISED REPRESENTATIVE: AUTHORISED REP COMPLIANCE
GROUND FLOOR, 71 LOWER BAGGOT STREET
DUBLIN , IRELAND
D02 P593

www.authorisedrepcompliance.com.



Spa

ins spa 39650 - A

OTTAWA
BATHROOM
CEILING LIGHT

INSTRUCTION MANUAL

IMPORTANT: Please read these instructions before using the product and retain for future use.

SAFETY AND CARE ADVICE

For your safety, this product must be installed in accordance with local building regulations. If in any doubt, or where required by law, consult a competent person who is registered with an electrical self-certification scheme. Further information is available online or from your local authority.

This product has been designed for non-professional, domestic use only.

Dispose of all packaging components correctly and responsibly and in accordance with all local laws and regulations. Never leave packaging components within reach of children, as they can be a source of danger.

Before inserting or replacing a bulb, ensure the power is switched off and the bulb has cooled down.

Do not modify any product before or after installation. This may render the product unsafe.

This is a Class 2 product and must not be earthed.

This fitting must be permanently wired to the electric system.

Always shut off the power to the circuit before starting installation.

WARNINGS

This product is not intended for use by persons (including children) with reduced physical, sensory and mental capabilities, or lack of experience and knowledge, unless they have been given supervision or instruction concerning the use of the product by persons responsible for their safety.

Children should be supervised to ensure that they do not play with the product.

CARE AND MAINTENANCE

Always disconnect the power supply when servicing or cleaning.

Use a clean, soft, dry or slightly damp cloth for cleaning this product.

Do not use abrasive cloths or polishes, as this may cause damage to the product.

CHANGING BULBS

This product requires 3 x 3W max. LED G9 capsule bulbs (bulbs not included).

This fitting is suitable for dimming when connected to an external dimming switch and using suitable LED dimmable bulbs.

Ensure that the power supply has been disconnected and the bulb has cooled down before replacing.

PARTS LIST

Ceiling light x 1
Mounting screws x 2
Wall plugs x 2
Glass shade x 3

FIXING INSTRUCTIONS

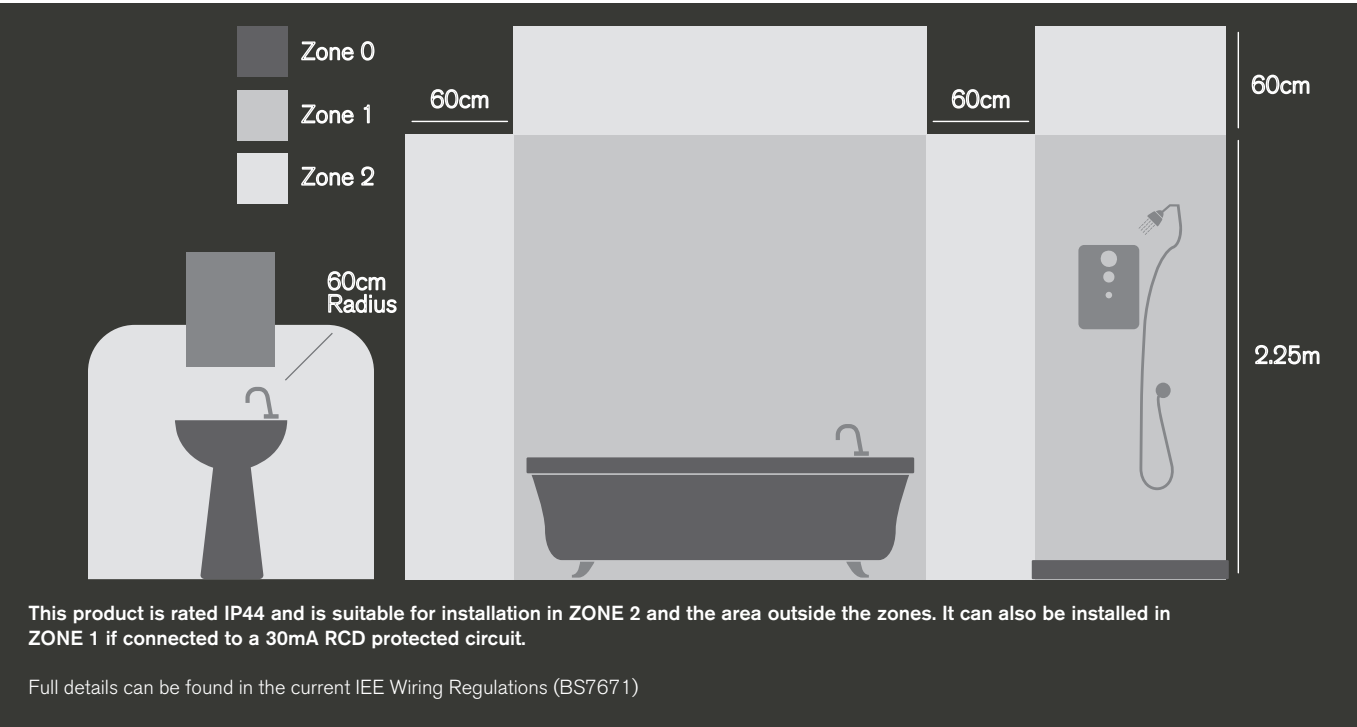
This light fitting is double insulated and must not be earthed.
Do not attach any part of it to an Earth wire or terminal.
Make sure that there is a joist or other solid mounting at the point of fixing. This is necessary to take the weight of the fitting.

Double insulated items (Class 2): These are marked with this symbol:



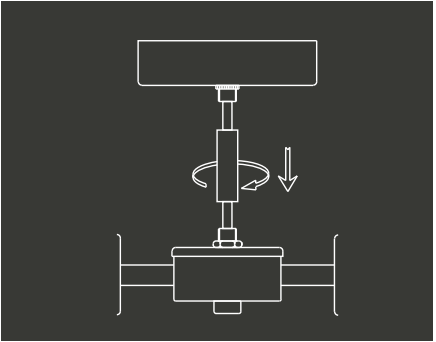
LOCATION

See the diagram shown below for correct placement of the IP44 fitting:



ASSEMBLY

Step 1 Screw the cylinder onto the centre body.



Step 2 Taking care not to damage any house wiring, detach the mounting strap from the fitting and affix to the ceiling using the screws supplied.

These screws should penetrate the joist by at least 2cm.

